

Eames Fine Art

Framing Options Standard
**Only available with Window
Mount**

*20 x 30 mm Pre-stained black
wood finish:



*20 x 17.5 mm Black/white
poster pre-painted satin finish



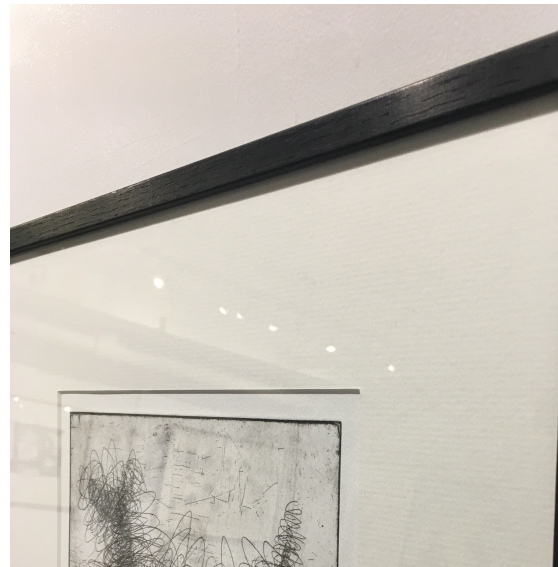
*20 x 20 mm Black/white cube
pre-painted satin finish, deeper
than poster frame



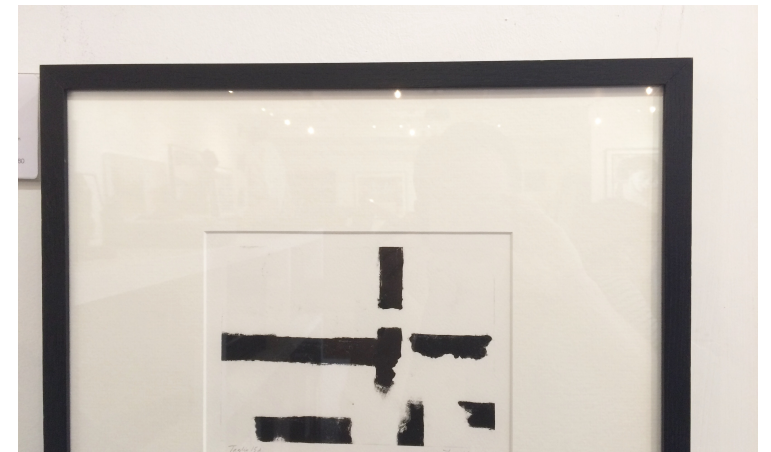
Premium finishes

Available with Window mount |
Float window mount | Float
mount

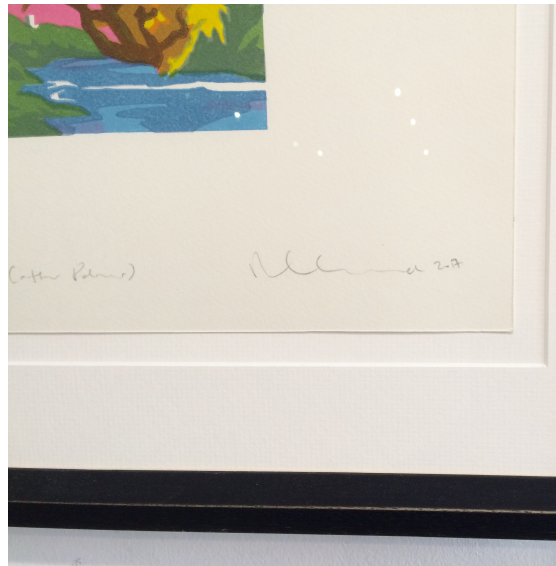
*15 x 30 mm black/brown/
Jacobean stained oak (hand
stained wood finish)



*12 x 20 mm black/natural/brown
and grey brown stained oak (thin
hand stained wood finish) Float
mount not available



*20 x 35 mm Charcoal rub
(distressed finish with a bevelled
edge in dark charcoal or dark
brown)



*20 x 20 mm Black red wedge
(black painted finish with crimson
undertone)



*3mm x 32 mm Black/white
aluminium (thin aluminium frame
with a satin painted finish - NOT
SUITABLE FOR ANYTHING OVER
500x500m



Mount types

Float window mount

Very similar to a window mount apart from the window mount does not cover the edge of the artwork. The edges of the artwork are visible as there is a small 'float' (gap) between the edge of the artwork and the mount. The artwork is hinged to the back board with acid free tape. This is a good option if the work has been signed, titled and/or editioned right on the edge of the paper, or if the paper has a deckled edge.



Float mount

No window - the artwork is hinged to the backboard and all edges are visible. As there's no window mount to sit between the artwork and the glass, the framer will add a fillet/spacer to sit under the rebate (lip) of the frame to stop them from touching. Because of this, it cannot be offered when using frames with a smaller profile, e.g. poster, aluminium or 12x20mm



Window mount

The most popular type of mount. A 'window' is cut out of mountboard and placed on top of the artwork. It covers the very edge of the paper and leaves around 10mm around all the sides of the artwork. The mount board sits between the glass and the artwork, ensuring they do not touch each other.

