

# Eames Fine Art

Standard Framing Options

\*The 'Anita' frame

20 x 30 mm pre-stained black or  
white wood finish

Suitable for window, float  
window and float mounts



\*The 'Poster' frame

20 x 17.5 mm black or white  
matte finish moulding

Suitable for window and float  
window mounts



\*The 'Cube' frame  
20 x 20 mm black or white  
matte finish moulding

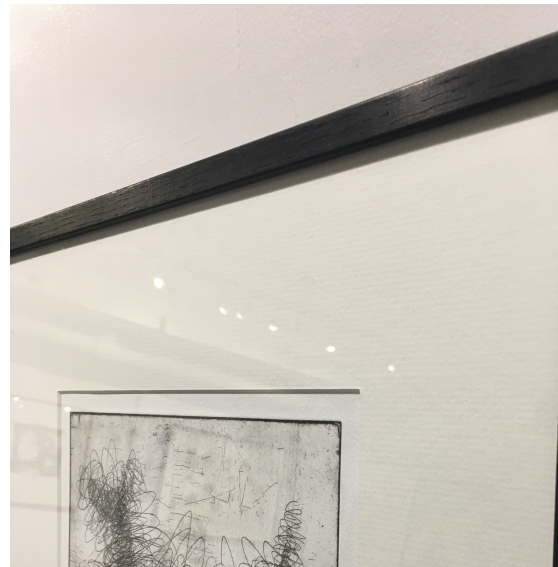
Suitable for window, float  
window and float mounts



## Premium finishes

\*The Hand-Stained Oak frame  
15 x 30 mm black, brown, dark  
brown or natural oak hand-stained  
wood finish

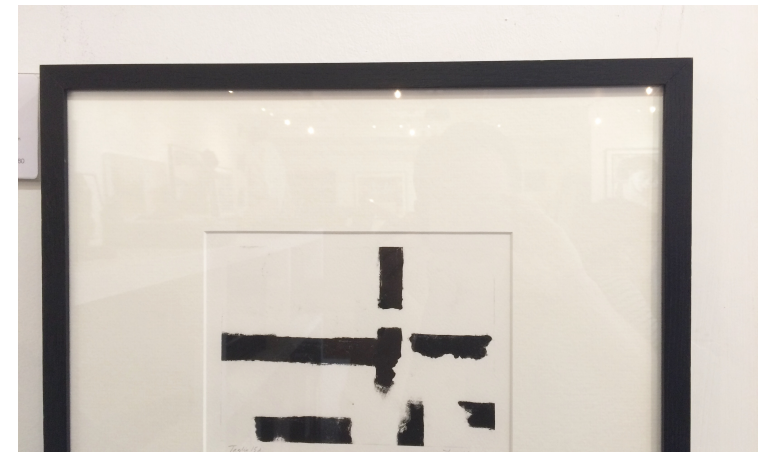
Suitable for window, float window  
and float mounts



\*The Hand-Stained Oak frame  
(thin)

12 x 20 mm black, brown, dark  
brown or natural hand-stained  
wood finish

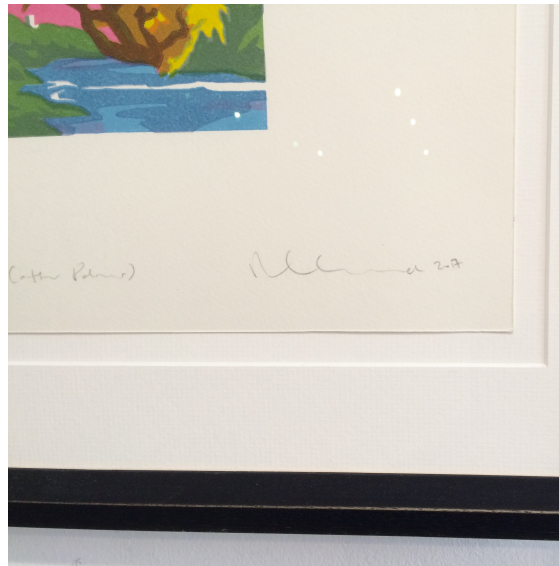
Suitable for window and float  
window mounts



\*The 'Rub' frame

20 x 35 mm distressed charcoal or brown finish with a bevelled edge

Suitable for window, float window and float mounts



\*The 'Black Red Wedge' frame  
20 x 15 mm pre-painted black  
frame with a crimson undertone

Suitable for window and float  
window mounts



\*The Aluminium frame

3mm x 32 mm black or white satin finish aluminium

Please note that this frame is not suitable for artworks that measure over 500 x 500 mm

Suitable for window or float window mounts





# Mount types

## Float window mount

Very similar to a window mount apart from the window mount does not cover the edge of the artwork. The edges of the artwork are visible as there is a small 'float' (gap) between the edge of the artwork and the mount. The artwork is hinged to the back board with acid free tape. This is a good option if the work has been signed, titled and/or editioned right on the edge of the paper, or if the paper has a deckled edge.



## Float mount

No window - the artwork is hinged to the backboard and all edges are visible. As there's no window mount to sit between the artwork and the glass, the framer will add a fillet/spacer to sit under the rebate (lip) of the frame to stop them from touching. Because of this, it cannot be offered when using frames with a smaller profile, e.g. poster, aluminium or 12x20mm



## Window mount

The most popular type of mount. A 'window' is cut out of mountboard and placed on top of the artwork. It covers the very edge of the paper and leaves around 10mm around all the sides of the artwork. The mount board sits between the glass and the artwork, ensuring they do not touch each other.

